



Capital Facilities & Utilities Element

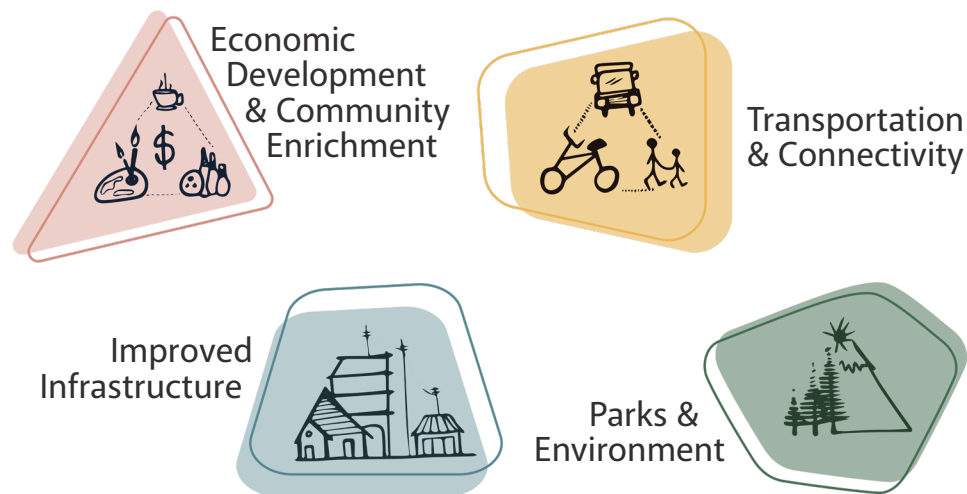
Element Purpose:

The Capital Facilities and Utilities Element is crucial for managing Sultan's essential public services and infrastructure, including streets, parks, schools, utilities, and public safety. It ensures that these services support the city's development as outlined in the Comprehensive Plan. This element aims to provide equitable access to quality infrastructure, promote community health, balance growth with environmental preservation, and address racial disparities in service provision.

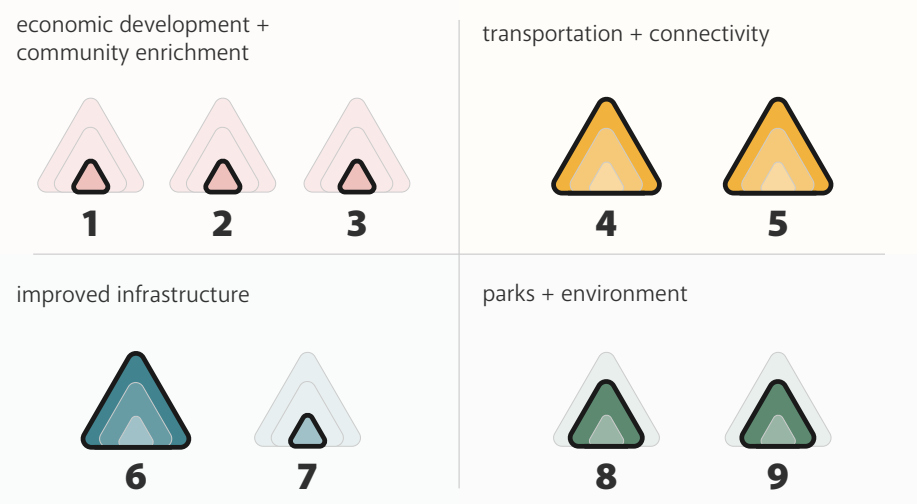
Key themes include ensuring infrastructure meets the needs of a rapidly growing population, enhancing community resilience, and integrating feedback from residents.

This element is foundational for planning and maintaining services that support the city's vision, addressing current deficiencies, and preparing for future growth. The element also emphasizes sustainable practices and mitigating natural hazards affecting existing infrastructure.

How it relates to Sultan's Community Vision:



Relationship to Vision Strategies (Nine Big Ideas):



Key:



Why does the Capital Facilities & Utilities Element matter:

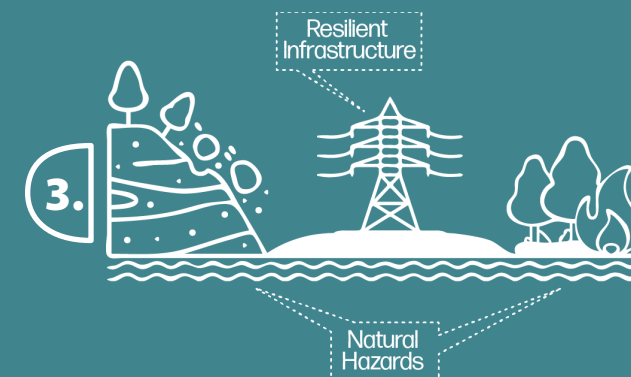
The Capital Facilities Element ensures Sultan's infrastructure and utilities effectively support both current needs and future development. This element provides a roadmap for sustainable growth, guiding the expansion and maintenance of essential services like water, sewage, electricity, and telecommunications. By prioritizing equitable access and community resilience, it enhances the quality of life for all residents and prepares the city to withstand natural hazards.

Moreover, this element's goals and policies are interconnected with other parts of the Comprehensive Plan, such as Land Use, Housing, Parks, and Transportation. This integration ensures that as Sultan grows, its infrastructure capacity will support population growth and land use patterns, promoting balanced and inclusive development.

What's New:

1. Service Delivery and Quality of Life: It ensures that residents have access to necessary services like clean water, effective sewage treatment, reliable electricity, and other essential utilities, which are fundamental to quality of life and public health.

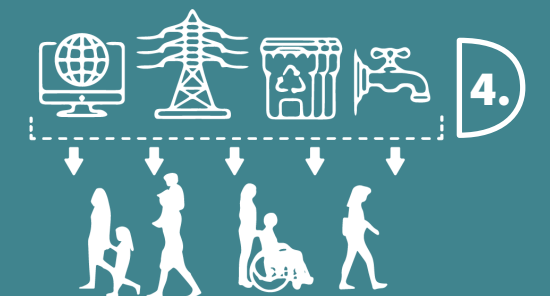
2. Sustainable Growth: As Sultan grows, this element guides the expansion and maintenance of infrastructure to support new development while addressing past deficiencies, thus ensuring sustainable and balanced growth.



3. Community Resilience and Environmental Sustainability: The element emphasizes building resilient infrastructure that can withstand natural hazards and integrates environmental sustainability into planning, which is vital for long-term community well-being.

4. Equity and Accessibility:

By prioritizing equitable access to facilities and utilities for all income levels, all residents benefit from the city's growth and development, addressing social and racial disparities.



5. Interconnection with Other Planning Elements:

The goals and policies in this element are interwoven with other components of the Comprehensive Plan, such as Land Use, Housing, Parks, and Transportation, making it foundational to achieving the overall vision for Sultan's future.

